

Point32Health

Delta Dental Benefits



Agenda

- Plan Overview
- Delta Dental's Network Advantage
- Member Tools & Resources
- The Importance of Preventive Care
- Questions





Plan Overview

Dental Program Overview | Standard Option

	Coverage Level
Calendar Year Maximum	\$1,500
Calendar Year Deductible *Does not apply to Type I or Type IV Services	\$50/\$150
	In and Out of Network Providers
Preventive and Diagnostic Care (Type I)	100%
Basic Services (Type II)	80%
Major Services (Type III)	50%
Orthodontia (any age) (Type IV)	50% \$1,500 Lifetime Max per Member

Dental Program Overview | High Option

	Coverage Level
Calendar Year Maximum	\$2,000
Calendar Year Deductible *Does not apply to Type I or Type IV Services	\$50/\$150
	In and Out of Network Providers
Preventive and Diagnostic Care (Type I)	100%
Basic Services (Type II)	90%
Major Services (Type III)	60%
Orthodontia (any age) (Type IV)	50% \$2,000 Lifetime Max per Member

Pretreatment Estimates

Ask your dentist for a pretreatment estimate. Find out ahead of time whether a proposed dental treatment is covered and how much it will cost.



Estimates can be provided for any procedure but are **recommended for services that usually cost over \$300**, such as such as crowns, wisdom tooth extractions, braces, bridges, dentures and oral surgery.

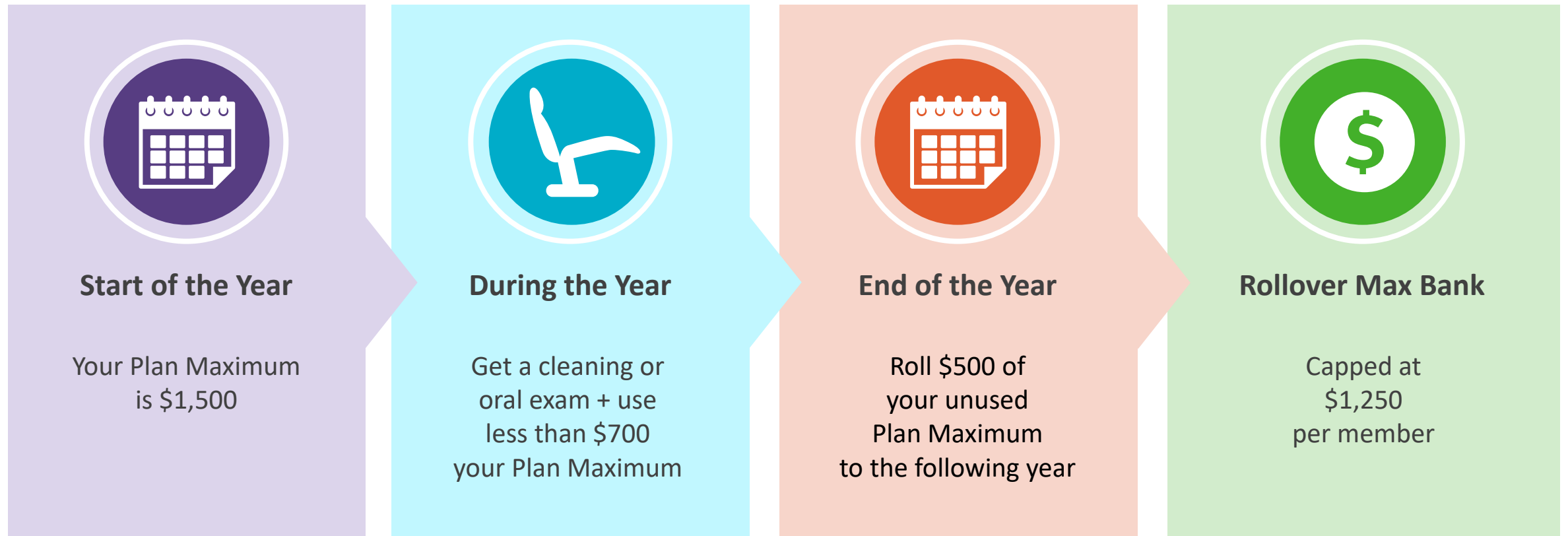


Pretreatment estimates help you:

- Make informed decisions about your health care dollars
- Avoid unexpected out-of-pocket expenses and bills
- Verify that you are receiving treatment from a participating dentist
- Confirm that the treatment/service is covered under your plan

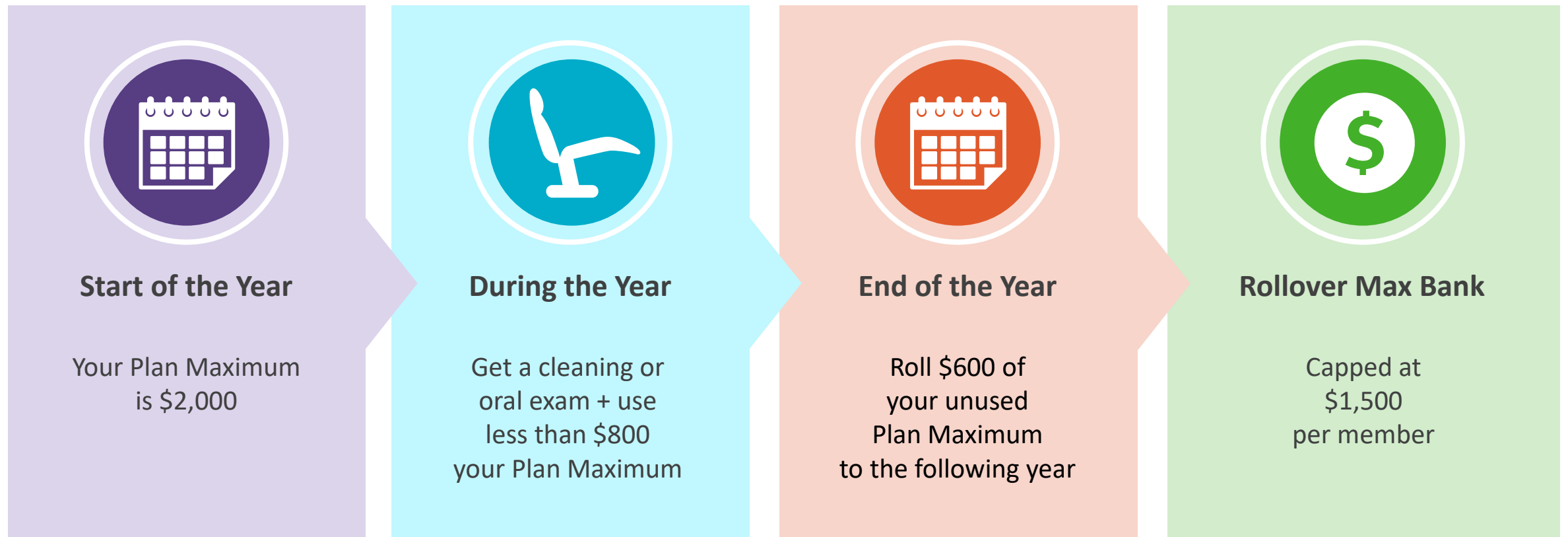
Rollover Max – Standard Option

Thanks to the Rollover Max benefit, you can save some of your unused benefit dollars to be applied to future services that would otherwise exceed your plan maximum.



Rollover Max – High Option

Thanks to the Rollover Max benefit, you can save some of your unused benefit dollars to be applied to future services that would otherwise exceed your plan maximum.



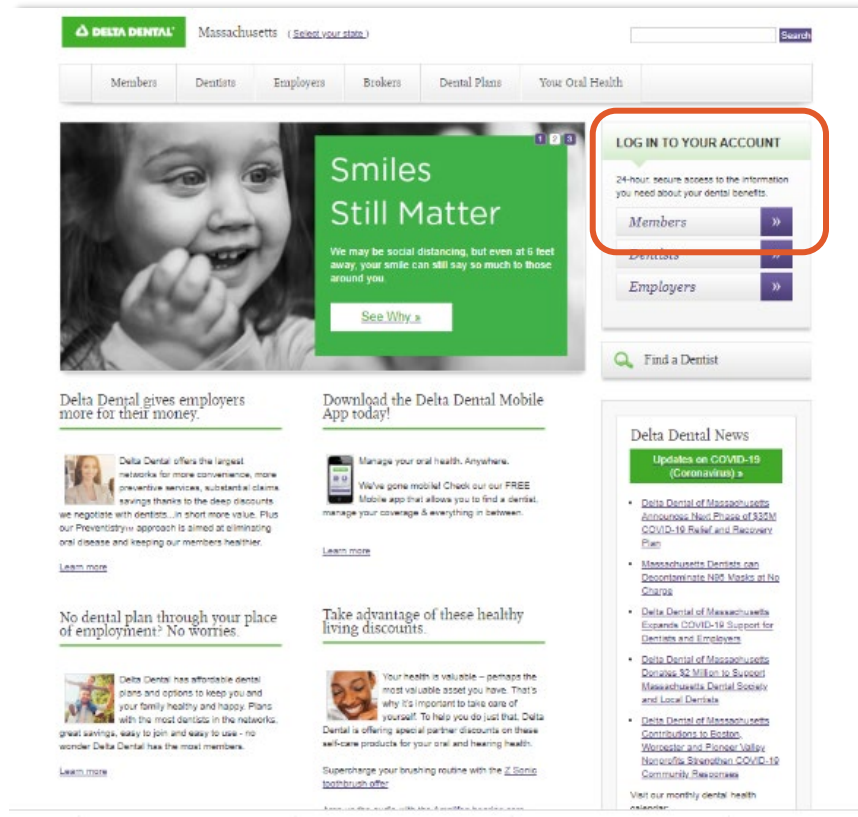
Checking Your Rollover and Plan Balance Detail

1

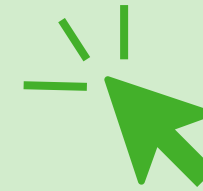


Log on to the member portal
deltadentalma.com

You'll need to register if this
is your first visit.



2



Click on
Benefit Maximums

The rollover amount for
each member will be
listed under *Rollover
Maximum*.



Delta Dental's Network Advantage

Finding a Participating Delta Dental PPO Network Dentist

Visit deltadental.com/findadentist

- 1 Select the type of dentist you are looking for in the Specialty drop down
- 2 Choose your plan: Delta Dental PPO Network
- 3 You can opt to find a dentist nearby by searching by location


 Then click 'Find dentists'


Looking for a dentist?

Find in-network dentists in your area by using your current location or entering a ZIP code manually.

Don't know which plan you have? [Sign in to your account](#), check your Delta Dental ID card or contact your Delta Dental Company.

Delta Dental Medicare Advantage and Delta Dental Patient Direct coverage are not available in all 50 states.

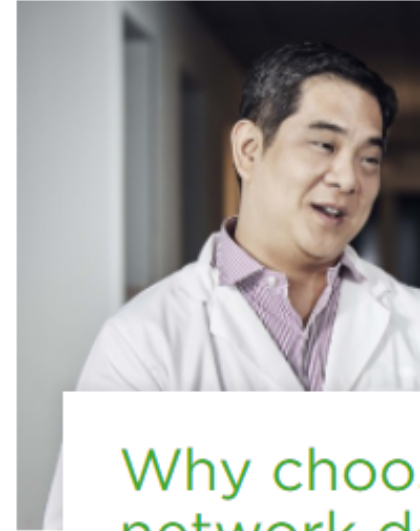
Specialty 

Your plan 

Dentist's last name (optional) _____

Search by current location:
 Yes No

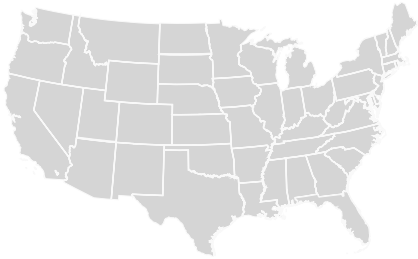
[Find dentists](#)



Why choose
network dentists?

[Read more](#)

Delta Dental's Network Advantage



With the Delta Dental PPO *Plus* Premier Network, members have access to one of the largest directly contracted networks of dentists in the country.

✓ Choice

- Over 150,000 unique providers in over 398,000 locations nationwide

✓ Savings

- Reduced out-of-pocket costs
- Discounts on covered care
- No balance billing for care

✓ Simplicity

- No claim forms or paperwork
- Access to cost transparency tools

Delta Dental PPO Network



Average Discount:
35%+

Delta Dental Premier Network



Average Discount:
15-25%

Save with the Delta Dental PPO Network



Example of what you can save on a porcelain crown*

Network	Delta Dental PPO Dentist	Delta Dental Premier Dentist	Out-of-Network Provider
Dentist Fee(s)	\$1,288	\$1,288	\$1,288
Maximum Dentist Can Charge	\$928	\$1,094	\$1,288
Benefit Percentage	60%	60%	60%
Member Pays	\$371	\$438	\$516

The Delta Dental PPO Network saves you:

\$145
compared to
the Out-of-Network
Provider

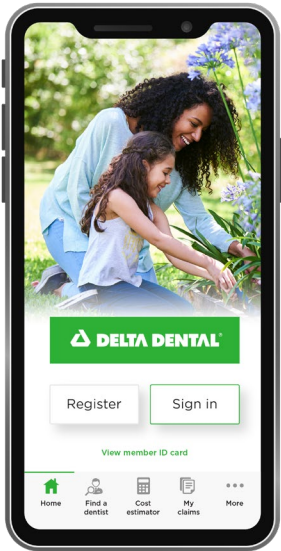
\$67
compared to
a Delta Dental Premier
Network Provider

*Example assumes deductible has been met. Savings for illustration only on a porcelain crown.



Member Resources, Discounts & Tools

Delta Dental Mobile App



SCAN TO
DOWNLOAD
DELTA DENTAL
MOBILE APP

Members must first be registered for the Delta Dental of Massachusetts secure, member portal. Once registered for the portal, members will use the same username and password to register and login to the mobile app.



Mobile ID Card

Say goodbye to paper cards. Members can view their digital ID card and for extra convenience, save it to their Apple Wallet or Google Play.



My Claims

Look up detailed claims information for your dentist visits over the last 18 months.



Find a Dentist

Members can search and compare dental offices to find one that's the best fit for their oral health care needs.



Quick Access to a Preferred Dentist

Members can save their preferred dentist, so their contact information is easy to find when making appointments.



Dental Care Cost Estimator

Educates and empowers members by providing estimated cost ranges on common dental care needs.

Healthy Living Discounts



myzsonic.com/DDMA

1-888-228-7706



amplifonusa.com/DDMA

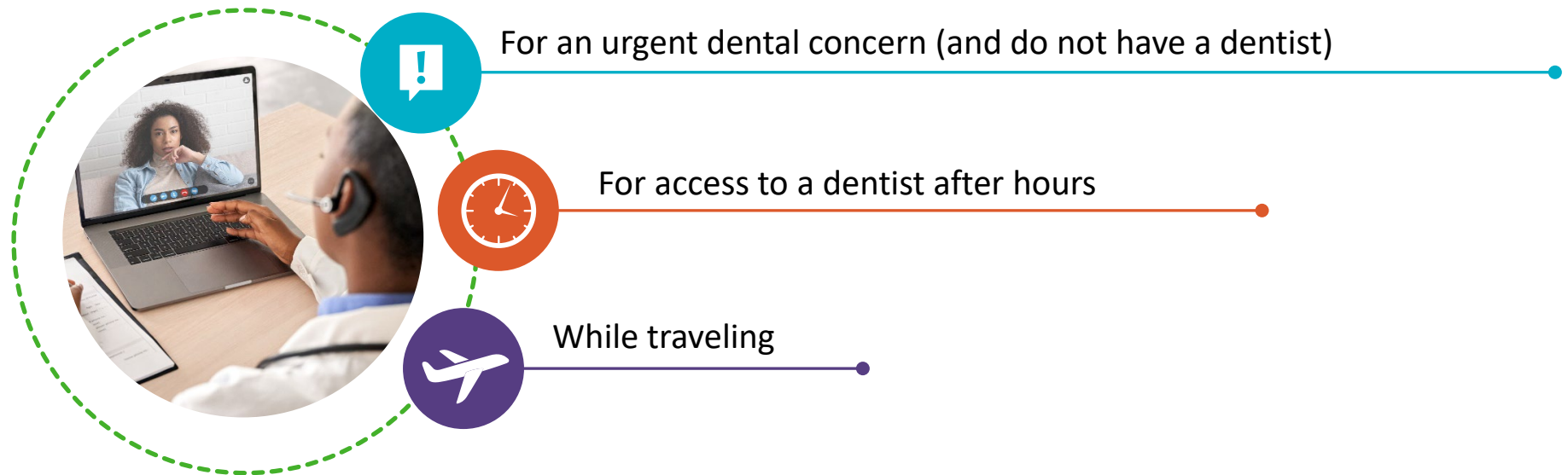
1-888-402-1394

TeleDentistry.com

It's easy to schedule a virtual visit

- Step 1: The member goes online to TeleDentistry.com/ddma
- Step 2: They complete a brief registration and health questionnaire.
- Step 3: They will be connected with a TeleDentistry.com dentist to begin their visit.

Members can schedule a virtual visit:



Member Resources



Welcome packet

- Welcome letter
- 2 ID cards per employee
- Postmarked within 10 business days upon enrollment



deltadentalma.com

- Find a dentist tool
- Member portal
- Mobile app
- Plan information
- Oral health resources
- grin!® magazine
- Oral health blog
- Oral health library



Customer Service

Live agents available: M – F | 8am – 8pm (EST)

IVR features:

- 24/7 availability
- Interactive voice prompts
- Exam/Cleaning reminders



Secure access to plan information

Online member portal

- Digital ID card
- Find a dentist
- Claims history

Mobile app

- Digital ID card
- Find a dentist
- Cost estimator



The Importance of Preventive Care

Brush | Wash | Scrape | Floss



The Ideal Oral Health Routine

- Brush 2 mins, twice a day
- Floss once a day
- Scrape your tongue once per day
- Use mouthwash after brushing & flossing
- Schedule regular dental checkups
- Replace your toothbrush or electric toothbrush heads at least every 3 months
- Eat a healthy, balanced diet
- Remember to use your smile power



Questions?